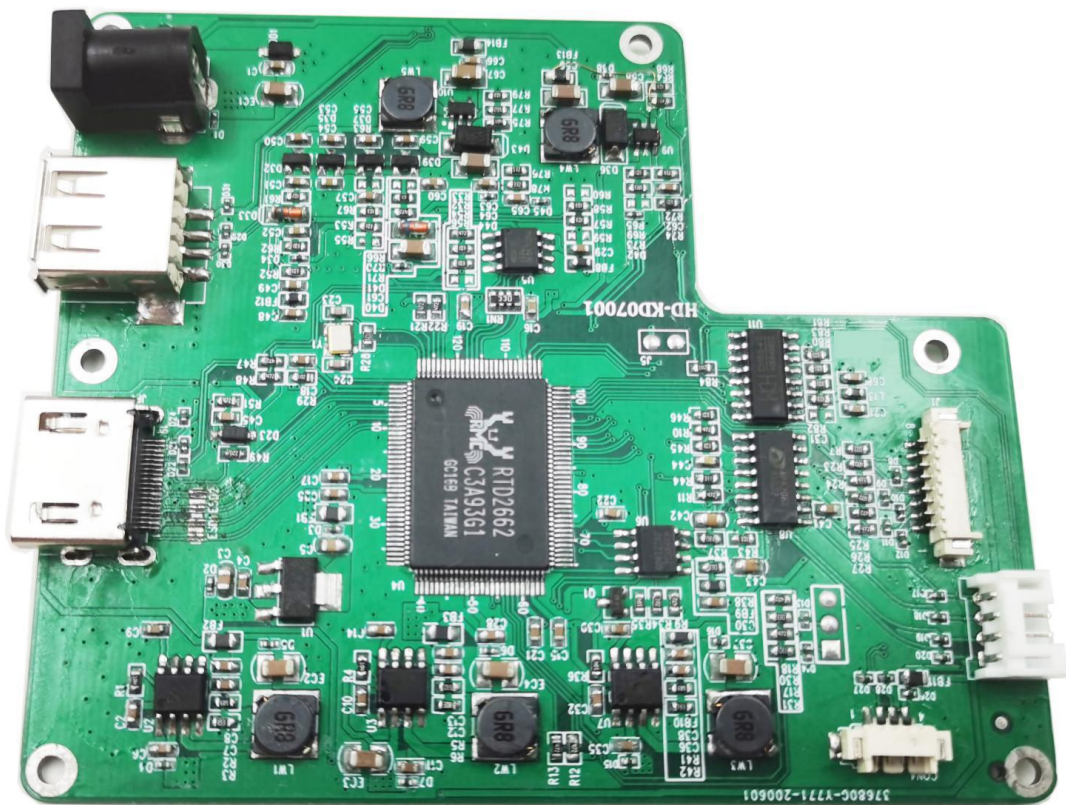


**HD-KD07001A**

**7.0 Inch HDMI**



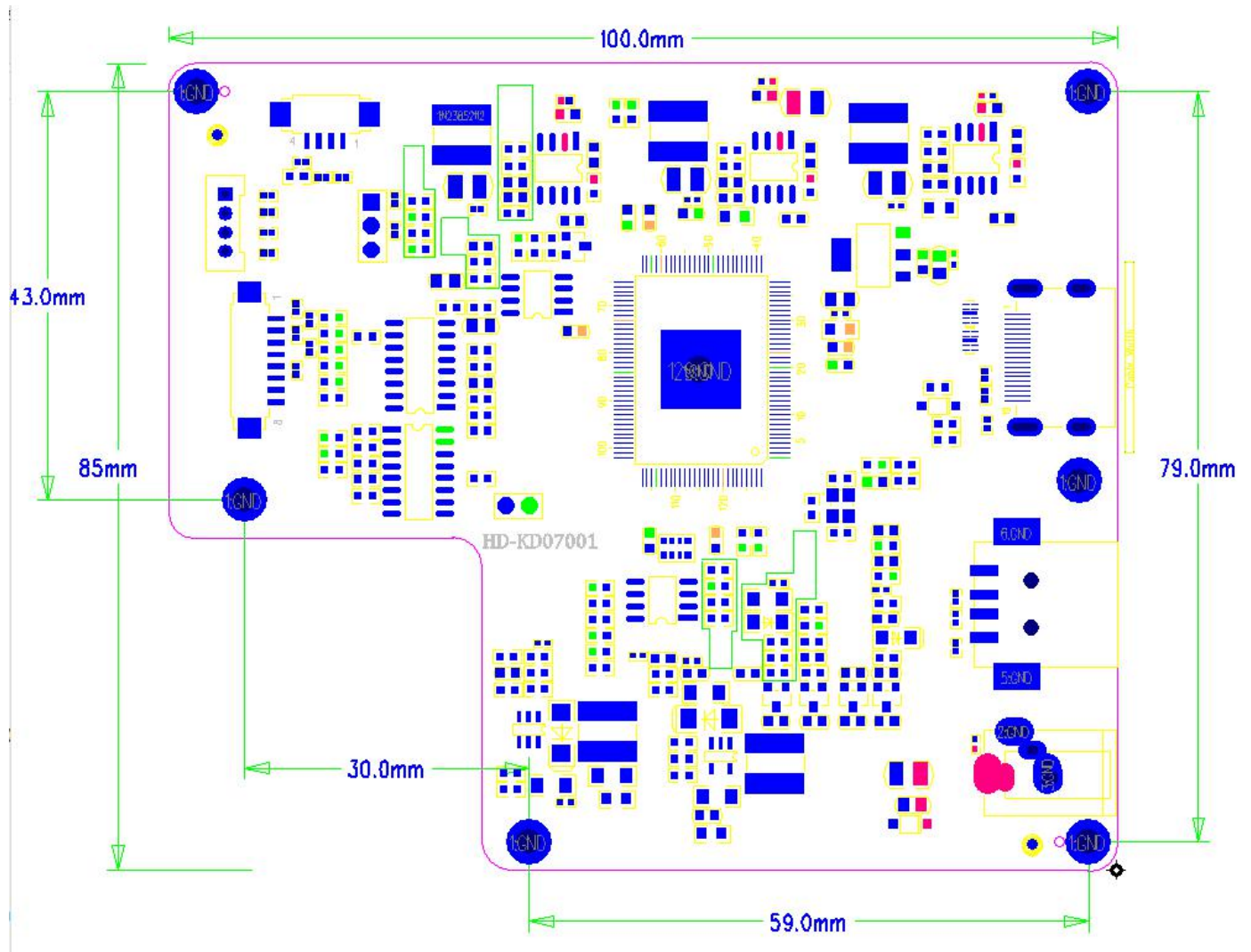
## 1. General Specifications

	Feature	Spec
Characteristics	Size	7 inch
	Resolution	1024(horizontal)*600(Vertical)
	Interface	HDMI
	Connect type	Connector
	Display Colors	16.7M
	Technology type	a-Si
	Pixel pitch (mm)	0.150*0.143
	Pixel Configuration	R.G.B.-Stripe
	Display Mode	Normally Black
	LCD Driver IC	EK79001HN+EK73215BCGA
	CTP Driver IC	ILI2511
	Viewing Direction	Full view
Mechanical	LCM (W x H x D) (mm)	165*100*7.27
	Active Area(mm)	154.21 x85.92
	With /Without TSP	With CTP
	Weight (g)	TBD
	LED Numbers	30 LEDs

## 2. Electrical Characteristics

Item	Symbol	MIN	Typ	MAX	Unit
Operating Voltage	VDD	+10V	+12	+14	V
Operating Current	I <sub>dd</sub>	340	360	380	mA
Operating Temperature	TOPR	-20	-	70	°C
Storage Temperature	TSTG	-30	-	80	°C
Life time			30000		Hrs

## 3. PCB Board



## 4. PIN-MAP

### POWER CONNECTOR

DC JACK :DC005 (5.5-2.1MM)

Pin	Signal	Description
1	VDD	Power supply +12V
2	GND	GND

### TOUCH CONNECTOR

USB : TYPE A USB & MICRO USB

USB TYPE A

Pin	Signal	Description
1	USB 5V	Power supply 5V
2	DM	Data-
3	DP	Data+
4	GND	Ground

### HDMI CONNECTOR

HDMI : HDMI-019S

Pin	Signal	Description
1	TMDS Data 2+	TMDS Transition differential signal 2+
2	TMDS Data2 Sh	Data2 Shielding ground
3	TMDS Data 2-	TMDS Transition differential signal 2-
4	TMDS Data 1+	TMDS Transition differential signal 1+
5	TMDS Data1 Sh	Data1 Shielding ground
6	TMDS Data 1-	TMDS Transition differential signal 1-
7	TMDS Data 0+	TMDS Transition differential signal 0+
8	TMDS Data 0 S	Data0 Shielding ground
9	TMDS Data 0-	TMDS Transition differential signal 0-
10	TMDS Clock+	TMDS Transition differential signal Clock+
11	TMDS Clock Sh	Clock Shielding ground
12	TMDS Clock-	TMDS Transition differential signal Clock-
13	CEC	Electronic protocol CEC
14	NC	NC
15	SCL	I2C Clock Line
16	SDA	I2C DATA Line
17	DDC/CEC GND	Data display channel
18	+5V	+5V Power
19	Hot Plug Detec	Hot Plug Detec

## OSD KEY CONNECTOR

OSD:8P-1.25MM

Pin	Signal	Description
1	MENU	Popup menu KEY
2	PWR	Power KEY
3	EXIT	Exit KEY
4	UP	Up KEY
5	DOWN	Down KEY
6	LED	LED control
7	GND	Ground
8	VCC	KEY board POWER

## Audio definition CONNECTOR

Audio: 4P-2.0MM

Pin	Signal	Description
1	R+	Audio right channel output
2	R-	Audio right channel output
3	L+	Audio left channel output
4	L-	Audio left channel output

## LCD ( FPC nest definition ) CONNECTOR

LCD:40P-0.5MM

Pin	Signal	Description
1	VCOM	Common Voltage
2	VDD	Power Voltage for digital circuit
3	VDD	Power Voltage for digital circuit
4	NC	No connection
5	RESET	Global reset pin
6	STBYB	Standby mode Normally pulled high STBYB=1,normal operation STBYB=0,timing controller,source Driver will turn off,all output are High-Z
7	GND	Ground
8	RXIN0-	-LVDS differential data input
9	RXIN0+	+LVDS differential data input
10	GND	Ground
11	RXIN1-	-LVDS differential data input
12	RXIN1+	+LVDS differential data input

13	GND	Ground
14	RXIN2-	-LVDS differential data input
15	RXIN2+	+LVDS differential data input
16	GND	Ground
17	RXCLKIN-	-LVDS differential clock input
18	RXCLKIN+	+LVDS differential clock input
19	GND	Ground
20	RXIN3-	-LVDS differential data input
21	RXIN3+	-LVDS differential data input
22	GND	Ground
23	NC	No connection
24	NC	No connection
25	GND	Ground
26	NC	No connection
27	DIMO	Backlight CABC controller signal output
28	SELB	6bit/8bit mode select
29	AVDD	Power for Analog Circuit
30	GND	Ground
31	LED-	LED Cathode
32	LED-	LED Cathode
33	L/R	Horizontal inversion
34	U/D	Vertical inversion
35	VGL	Gate OFF Voltage    Power supply
36	NC	No connection
37	NC	No connection
38	VGH	Gate ON Voltage
39	LED+	LED Anode
40	LED+	LED Anode

## 5. Block Diagram

